

## Model• HA2009

Epoxy potting plug terminal, leading wire or PCB welding output.AC/DC motor, current and voltage detection, battery powered, charging current detection, welding machine, inverter, automatic elevator, crane, papermaking,printing presses, injection molding machine, elevator Mechanical and electrical equipment such as AC/DC current/voltage detection

### Technical index:

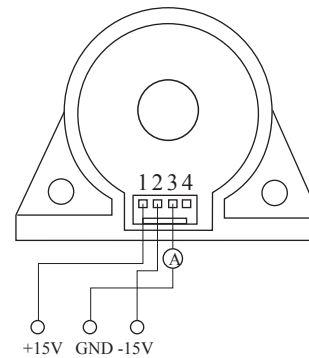
- Flame resistance: UL94-V0
- Operating temperature: -25~+70°C
- Storage temperature: -40~+85°C
- Bandwidth: DC~150kHz
- Dielectric strength: 3.5KV 50Hz 1min

### Electric parameters:

$I_p$	Rated input	$\pm 20$	A
$I_{PM}$	Input measured range	$\pm 30$	A
$I_{OUT}$	Rated output	$\pm 50$	mA
X	Accuracy	0.5	%
$\mathcal{E}_L$	Linearity	<0.2	%
$V_C$	Supply voltage( $\pm 5\%$ )	$\pm 15$	V
$I_C$	Current consumption	$\pm 10$	mA+Im
$R_L$	Load impedance		$\Omega$
$I_{OE}$	Zero offsetTA=25°C	$\leq \pm 0.75$	mA
$T_R$	Response time	<1	$\mu s$
N.W	Weight	36	g



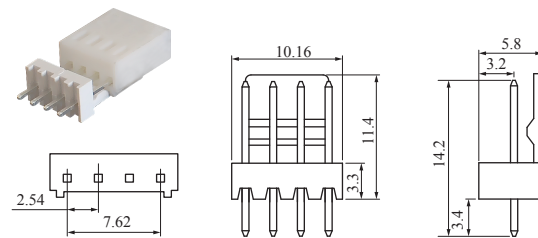
### Schematic diagram:



### Terminal definition

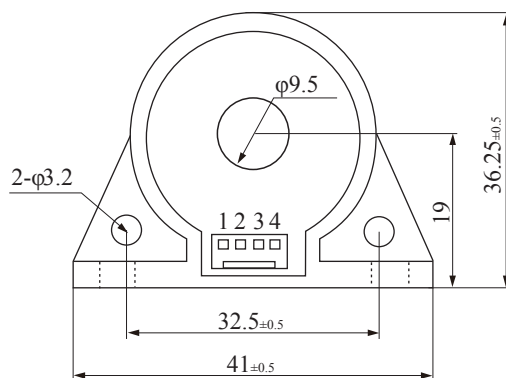
- 1: +V
- 2: -V
- 3: M
- 4: N.C

### connector schematic diagram:



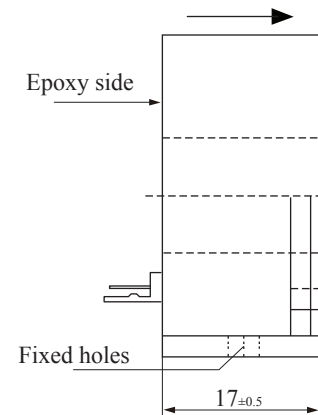
Cold-press terminal plug /socket,Distance 2.54, Stitch size 0.5×0.5

### Dimensions ( in mm ) :



Front view

### current direction



Side view