

Model : SCT010T-D

Characteristic:

5V DC output split core current transformer

Technical indicators:

Hanging installation, Crimping terminal output

Material of core: Ferrite

Work voltage: 720V

Work temperature: -25°C ~ +60°C

Storage temperature: -30°C ~ +90°C

Frequency range: 50Hz ~ 60Hz

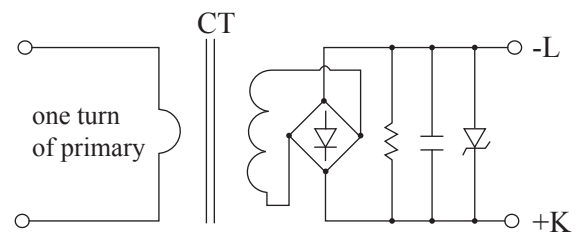
Dielectric strength: 3.5KV 50Hz 1min



Electric parameter:

Rated input	25	A
Max.Input	100% (continuous) / 150% (1min)	
Rated output	5	V DC
output ripple voltage	≤5% Output voltage	
Accuracy	±2	%
Output impedance	6.8	kΩ
Isolation impedance	>100MΩ(500V DC)	
Weight		g

Wiring diagram:



Outline size diagram(in mm):

