

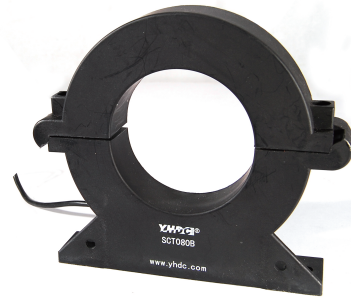
## Model: SCT080B(T)

### Characteristic:

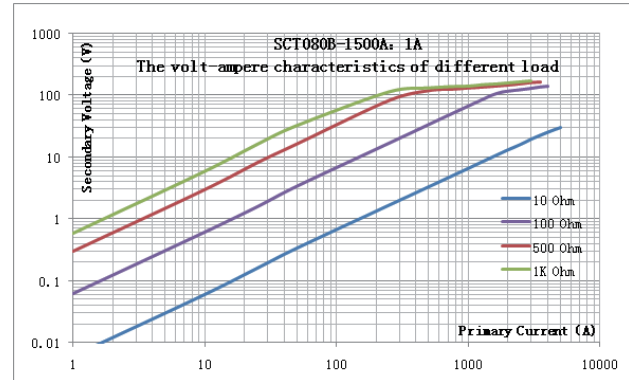
Split core structure, round window, sub-plate mount, leading wire or Crimping terminal output.

### Technical indicators:

- Material of core: Silicon steel sheet
- Fire resistance property:UL94-V0
- Work voltage:660V
- Work temperature:-25°C~+80°C
- Storage temperature:-35°C~+95°C
- Frequency range:50Hz~400Hz
- Dielectric strength:3.5KV 50Hz 1min
- Weight:



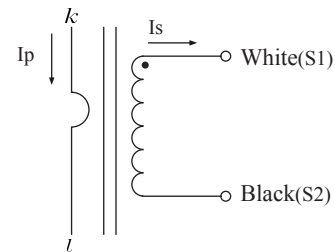
### Characteristic curve in different load volt-ampere:



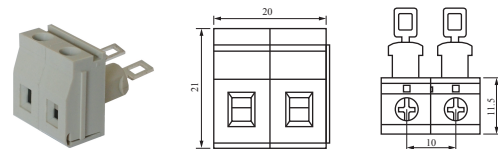
### Electric parameter:

output (A)	input/output	Accuracy/Load (VA)			
		0.2	0.5	1	3
1A	100/1	---	1	2	3.75
	500/1	---	1.5	3.75	7.5
	800/1	1	2.5	5	7.5
	1000/1	1.5	5	7.5	10
	1200/1	2	5	10	15
	1500/1	2.5	5	10	15
	2000/1	2.5	5	10	15
5A	500/5	---	1.5	2.5	3.75
	600/5	---	2.5	5	7.5
	800/5	---	3.75	5	10
	1000/5	1.5	5	7.5	10
	1200/5	2	5	7.5	10
	1500/5	2.5	5	10	15
	2000/5	2.5	5	10	20

### Wiring diagram:



### plug connector of schematic diagram:



Specialized crimp terminal of plug-in transformer, distance: 10mm, current 20A

### Outline size diagram(in mm):

