

Split core current transformer



Model : SCT019S

Characteristic:

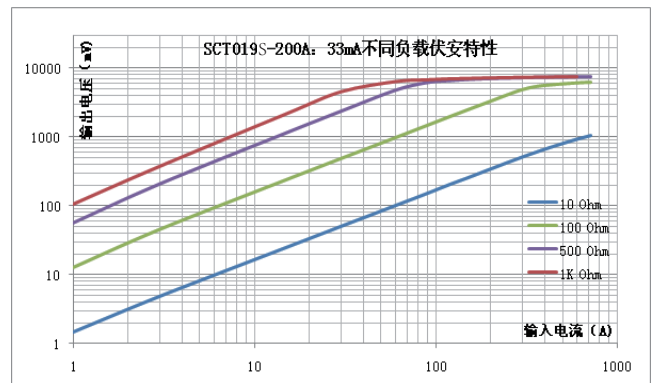
Opening size 19mmx19mm, Compatible to foreign products,
Epoxy encapsulated, leading wire output (1m) .



Technical indicators:

- Material of core: Silicon steel sheet
- Fire resistance property: UL94-V0
- Work voltage: 660V
- Work temperature: -25°C ~ +70°C
- Storage temperature: -40°C ~ +85°C
- Frequency range: 50Hz ~ 60Hz
- Dielectric strength: 3.5KV 50Hz 1min

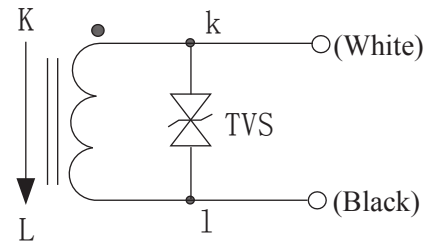
Characteristic curve in different load volt-ampere:



Electric parameter:

Rated input(rms)	300	A
Max. Input	400	A
Rated output	33	mA
Turns ratio		
Accuracy	±1	%
Linearity	≤0.2	%
Phase error		
max:Sampling resistance	20	Ω
Weight	91	g

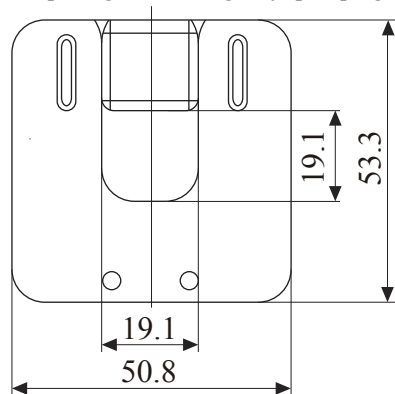
Wiring diagram:



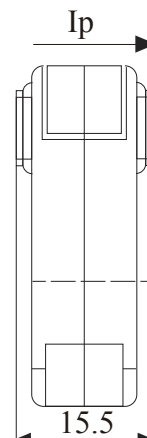
Built-in two-way protection diode, current output type

Outline size diagram(in mm):

Core opening and closing way: pull plug type



Front view



Side view