

## Model : SCT010T-D

### Characteristic:

5V DC output split core current transformer

### Technical indicators:

Hanging installation, Crimping terminal output

Material of core: Ferrite

Work voltage: 720V

Work temperature:  $-25^{\circ}\text{C} \sim +60^{\circ}\text{C}$

Storage temperature:  $-30^{\circ}\text{C} \sim +90^{\circ}\text{C}$

Frequency range: 50Hz~60Hz

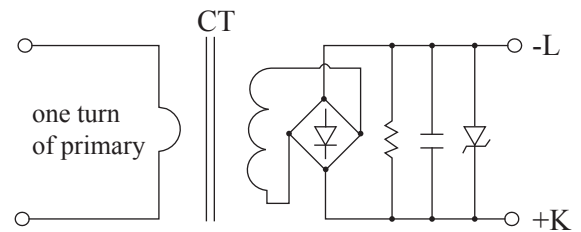
Dielectric strength: 3.5KV 50Hz 1min



### Electric parameter:

Rated input	50	A
Max.Input	100% (continuous) / 150% (1min)	
Rated output	5	V DC
output ripple voltage	$\leq 5\%$ Output voltage	
Accuracy	$\pm 2$	%
Output impedance	6.2	k $\Omega$
Isolation impedance	$> 100\text{M}\Omega(500\text{V DC})$	
Weight		g

### Wiring diagram:



### Outline size diagram(in mm):

