

## Model : SCT010T-D

### Characteristic:

5V DC output split core current transformer

### Technical indicators:

Hanging installation, Crimping terminal output

Material of core:Ferrite

Work voltage:720V

Work temperature:-25℃~+60℃

Storage temperature:-30℃~+90℃

Frequency range:50Hz~60Hz

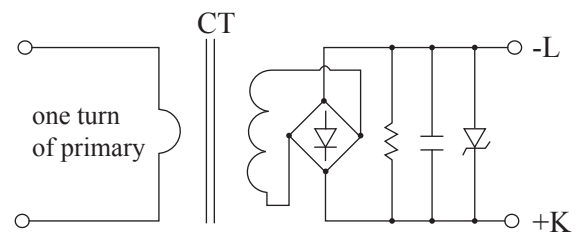
Dielectric strength:3.5KV 50Hz 1min



### Electric parameter:

Rated input	20	A
Max.Input	100% (continuous) /150% (1min)	
Rated output	5	V DC
output ripple voltage	≤5% Output voltage	
Accuracy	±2	%
Output impedance	6.8	kΩ
Isolation impedance	>100MΩ(500V DC)	
Weight		g

### Wiring diagram:



### Outline size diagram(in mm):

