

Model: SCT065B(T)

Characteristic:

Split core structure, round window, sub-plate mount, leading wire or Crimping terminal output.



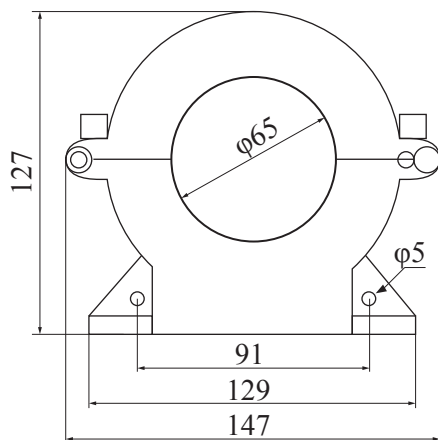
Technical indicators:

- Material of core: Silicon steel sheet
- Fire resistance property: UL94-V0
- Work voltage: 660V
- Work temperature: -25°C ~ +80°C
- Storage temperature: -35°C ~ +95°C
- Frequency range: 50Hz ~ 400Hz
- Dielectric strength: 3.5KV 50Hz 1min
- Weight: 450g

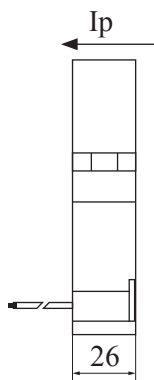
Electric parameter:

output (A)	input/output	Accuracy/Load (VA)			
		0.2	0.5	1	3
1A	100/1	---	1	2	3.75
	250/1	---	2	3.75	5
	400/1	---	2.5	3.75	5
	600/1	1	3.75	5	7.5
	800/1	1.5	3.75	7.5	10
	1000/1	2	5	7.5	10
	1500/1	2.5	5	7.5	10
5A	300/5	---	1.5	2.5	3.75
	400/5	---	2	3.75	5
	500/5	---	2.5	3.75	5
	600/5	---	2.5	5	7.5
	800/5	---	3.75	5	10
	1000/5	1.5	5	7.5	10
	1500/5	2	5	7.5 </td <td>15</td>	15

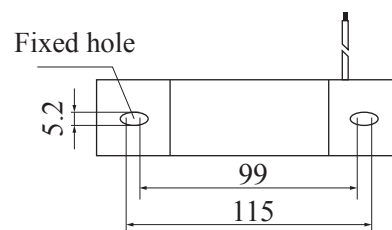
Outline size diagram(in mm):



Front view

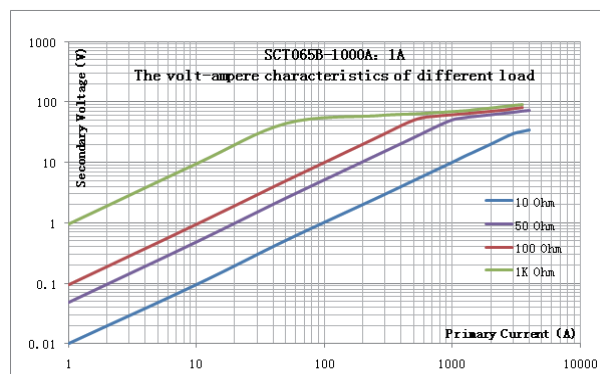


Side view

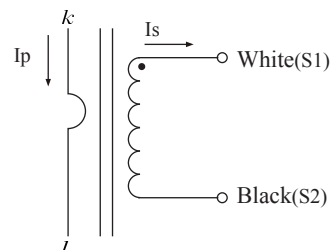


Bottom view

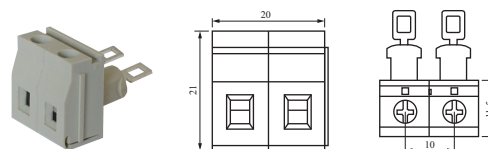
Characteristic curve in different load volt-ampere:



Wiring diagram:



plug connector of schematic diagram:



Specialized crimp terminal of plug-in transformer, distance: 10mm, current 20A