

Model: SCT031QL

Characteristic:

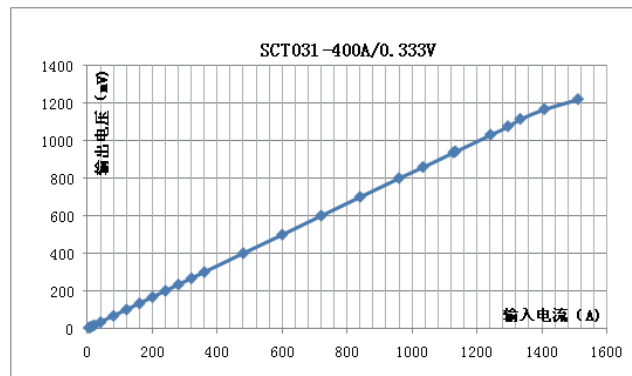
Opening size 31mmx31mm, Compatible to foreign products,
Epoxy encapsulated, leading wire output (1m) .



Technical indicators:

- Material of core: Silicon steel sheet
- Fire resistance property:UL94-V0
- Work voltage:660V
- Work temperature:-25℃~+70℃
- Storage temperature:-40℃~+85℃
- Frequency range:50Hz~60Hz
- Dielectric strength: 3.5KV 50Hz 1min

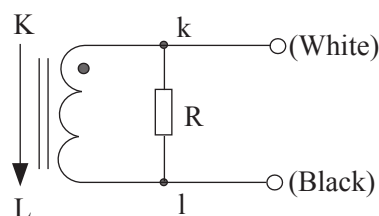
Characteristic curve in different load volt-ampere:



Electric parameter:

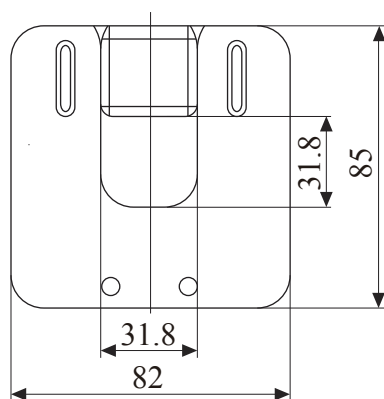
Rated input(rms)	600	A
Max. Input	750	A
Rated output	0.333	V
Turns ratio		
Accuracy	±1	%
Linearity	≤0.2	%
Phase error		
Weight	265	g

Wiring diagram:

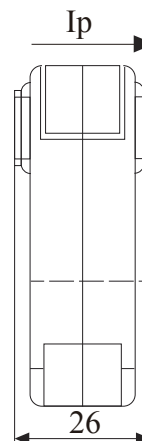


Outline size diagram(in mm):

Core opening and closing way: pull plug type



Front view



Side view

Built-in with sampling resistance, voltage output type