

Model: SCT045R

Characteristic:

Split core structure, hanging installation, window shape: round, diameter: 45mm. Secondary leading wire output, leads length: 1.5m.

Technical indicators:

Material of core: Silicon steel sheet

Fire resistance property:UL94-V0

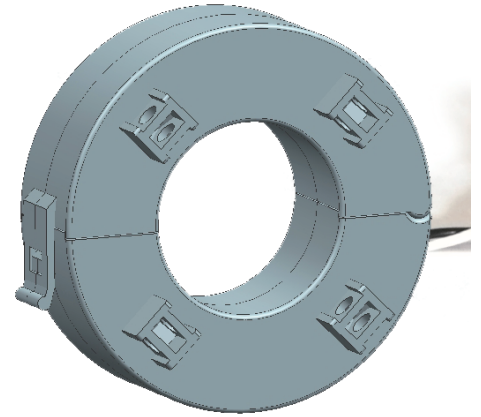
Work voltage:720V

Work temperature:-30 ~ +65

Storage temperature:-40 ~ +85

Frequency range:50Hz ~ 60Hz

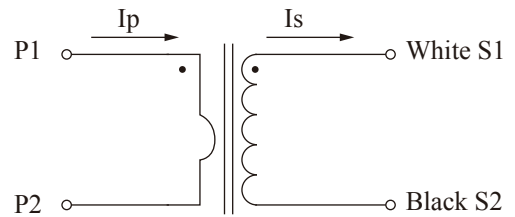
Dielectric strength:AC 3.5KV/1min



Electric parameter:

Rated input(rms)	400	A
Max.Input	500	A
Rated output	100	mA
Turns ratio	1: 4000	
Accuracy	±0.5	%
Linearity	≤0.5	%
Phase error	≤30	
max:Sampling resistance	50	Ω
Weight		g

Wiring diagram:



Outline size diagram(in mm):

