

Model:TA20-100

Characteristics:

Electrical load current remote monitoring, as electric control system input signal, lack of phase indicating, electrical energy measuring, motor monitoring.

Technical index:

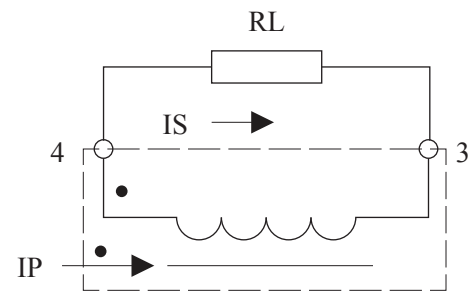
- Mounting type: PCB
- Material of the core: Nanocrystalline
- Flame resistance: UL94-V0
- Execution standard: GB1208-2006
- Operating temperature: $-35^{\circ}\text{C} \sim +85^{\circ}\text{C}$
- Storage temperature: $-45^{\circ}\text{C} \sim +95^{\circ}\text{C}$
- Frequency range: 20Hz-20KHz
- Dielectric strength: $\geq 3.5\text{KV}$ 50Hz 1min



Electrical parameters:

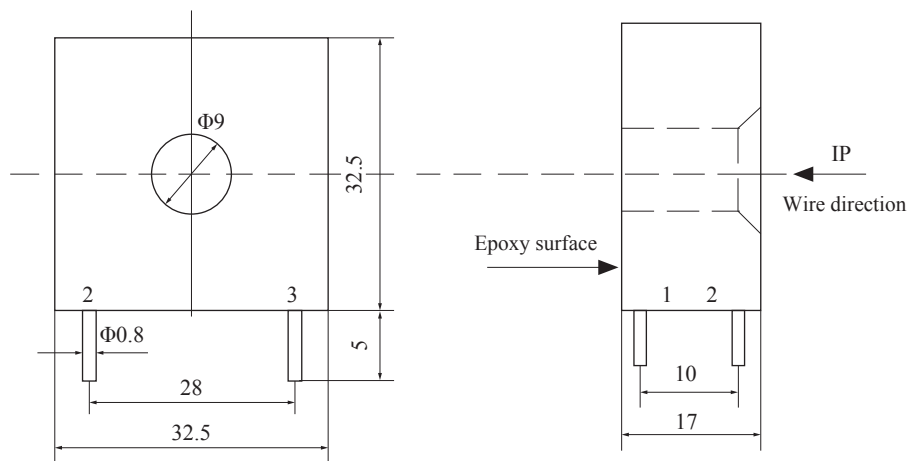
Rated input	0-20	A
Max.input	22	A
Rated output	0-20	mA
Turns ratio	1: 1000	
Accuracy	± 1	%
Linearity	≤ 0.2	%
Phase difference	$\leq 50'$	
max: Max. sampling resistance	400	Ω
Weight	43	g

Schematic diagram:



(pin 1 and pin 2 are null)

Dimensions (in mm) :



Front view

Side view