

# Mini current type voltage transformer



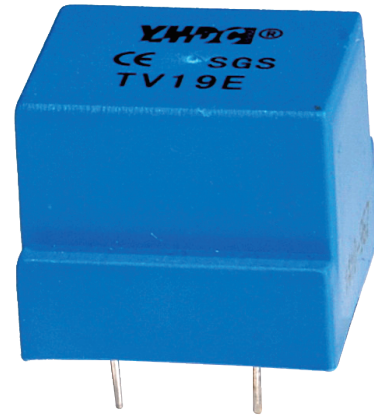
Model:TV19E

## Characteristics:

Adopt permalloy core, PCB mounting, fully enclosed. Used for voltage load remote monitoring, As the electric control system, the voltage input signal. As voltage measurement signal of watt-hour meter, high-frequency voltage detection

## Technical index:

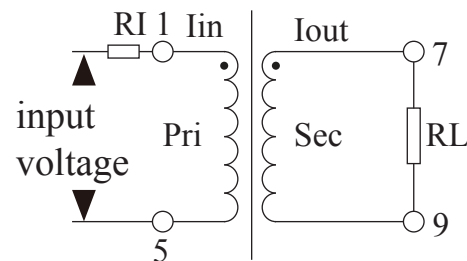
- Mounting type: PCB mounting
- Material of the core: Nanocrystalline
- Flame resistance: UL94-V0
- Operating temperature:  $-35^{\circ}\text{C} \sim +85^{\circ}\text{C}$
- Storage temperature:  $-45^{\circ}\text{C} \sim +95^{\circ}\text{C}$
- Frequency range: 20Hz-20KHz
- Dielectric strength: 3.5KV 50Hz 1min



## Electrical parameters:

Primary Max. working current	5	mA
Max. input		
Secondary output current	5	mA
Turns ratio	2000 : 2000	
Accuracy	$\pm 1$	%
Linearity	0.1	%
Max. measuring voltage	500	V
Phase difference	$\leq 25^{\circ}$	
Max. sampling resistance	500	$\Omega$
Weight	21	g

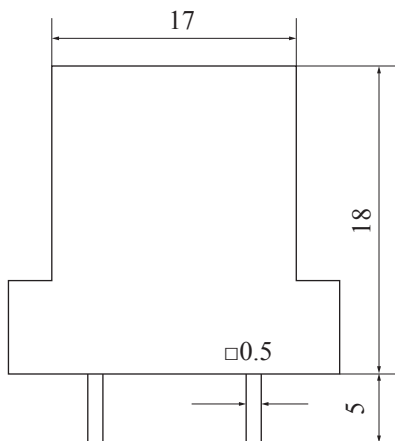
## Schematic diagram:



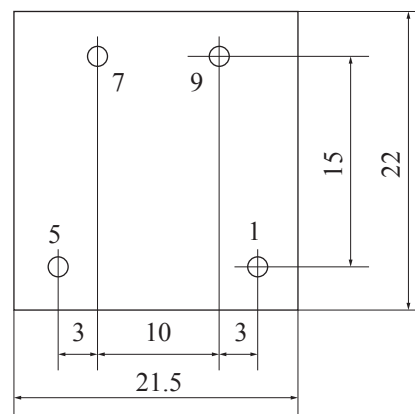
(RI is external limiting resistor)

RI is the limiting resistor of input end, it is according to  $V_{in}$  is AC input voltage.  $I_{in}$  is the Max. input current,  $r_1$  is primary winding DC resistance.

## Dimensions (in mm) :



Front view



Bottom view