

Through core type precision current transformer



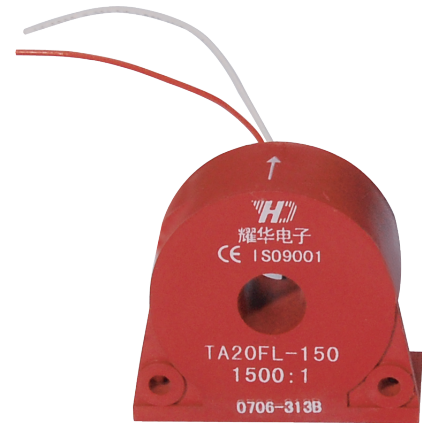
Model:TA20FL-200

Characteristics:

Leading wire type. Both horizontal and vertical mounting modes are available. Electrical load current remote monitoring, as electric control system input signal, lack of phase indicating, electrical energy measuring, motor monitoring.

Technical index:

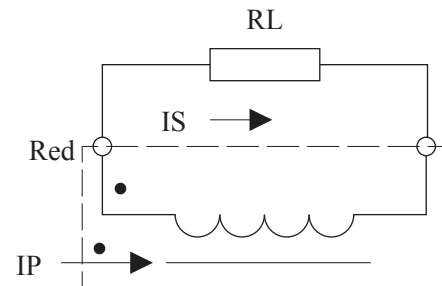
Mounting type: Plate mounting
 Material of the core: Nanocrystalline
 Flame resistance: UL94-V0
 Execution standard: GB1208-2006
 Operating temperature: $-35^{\circ}\text{C} \sim +85^{\circ}\text{C}$
 Storage temperature: $-45^{\circ}\text{C} \sim +95^{\circ}\text{C}$
 Frequency range: 20Hz-20KHz
 Dielectric strength: $\geq 3.5\text{KV}$ 50Hz 1min



Electrical parameters:

Rated input	0-40	A
Max.input	54	A
Rated output	0-20	mA
Turns ratio	1: 2000	
Accuracy	± 1	%
Linearity	≤ 0.2	%
Phase difference	$\leq 30'$	
max: Max. sampling resistance	600	Ω
Weight	42	g

Schematic diagram:



Dimensions (in mm) :

