

Primary core built-in type current transformer



Model:TA1310-03

Characteristics:

Epoxy resin encapsulated, Nanocrystalline core, mini outline size, primary coil built-in.

Technical index:

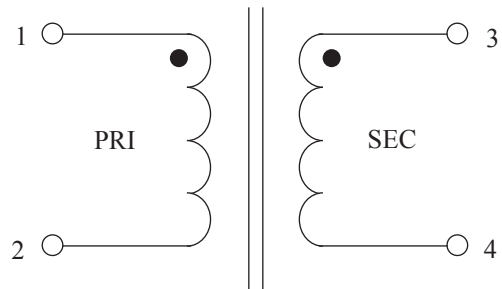
Mounting type: PCB
Material of the core: Nanocrystalline
Flame resistance: UL94-V0
Execution standard: GB1208-2006
Operating temperature: $-35^{\circ}\text{C} \sim +85^{\circ}\text{C}$
Storage temperature: $-45^{\circ}\text{C} \sim +95^{\circ}\text{C}$
Frequency range: 20Hz-20KHz
Dielectric strength: 2KV 50Hz 1min



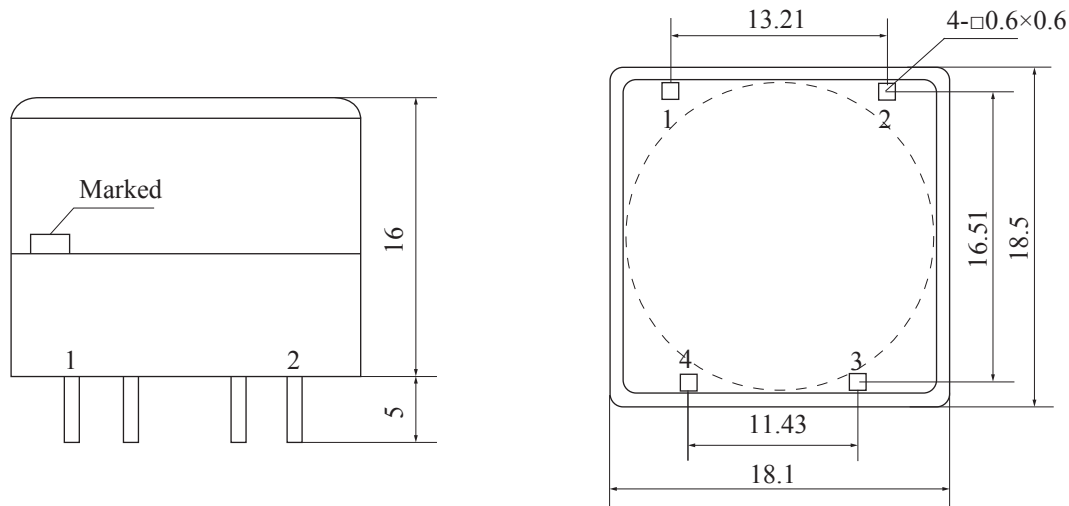
Electrical parameters:

Rated input	0-0.5	A
Max.input		A
Rated output	0-5	mA
Turns ratio	10: 1000	
Accuracy	± 1	%
Linearity	≤ 0.2	%
Phase difference		'
max: Max. sampling resistance	400	Ω
Weight	8	g

Schematic diagram:



Dimensions (in mm) :



Front view

Bottom view