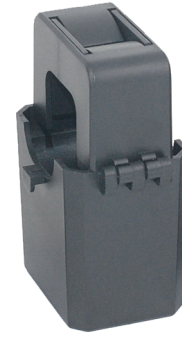


Model : SCT036TS

Characteristic:

Compatible to foreign products completely, built-in TVS.
 Purpose: Applicable for the current measuring monitoring and protection of AC motor, lighting equipment and air compressor.



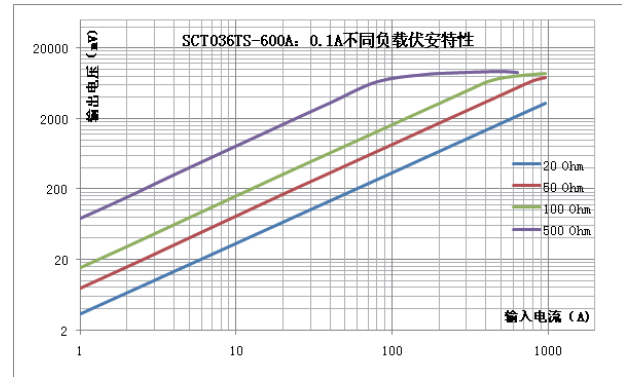
Technical indicators:

Hanging installation, Crimping terminal output
 Material of core: Silicon steel sheet
 Fire resistance property: UL94-V0
 Work voltage: 720V
 Work temperature: -25°C ~ +60°C
 Storage temperature: -30°C ~ +90°C
 Frequency range: 50Hz ~ 60Hz
 Dielectric strength: 3.5KV 50Hz 1min

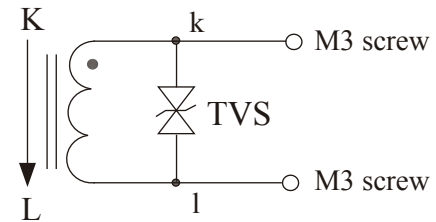
Electric parameter:

| | | |
|-------------------------|-------------|----|
| Rated input(rms) | 600 | A |
| Max. Input | 650 | A |
| Rated output | 100 | mA |
| Turns ratio | 1: 6000 | |
| Accuracy | 0.5/1 | % |
| Linearity | ≤ 0.2 | % |
| Phase error | +0.5 ± 0.5° | |
| max.Sampling resistance | 5 | Ω |
| Weight | 310 | g |

Characteristic curve in different load volt-ampere:



Wiring diagram:



TVS: Transient voltage suppressor, Current output type

Outline size diagram(in mm):

