

## Model: TCAH

Circular aperture, terminal output, din-rail installation; The faulty wiring can lead to product damage, The output is linear with primary test current, and the output signal can be directly enter automatic control equipment or PLC port.

### Safety indexes:

Flame retardant: UL94-V0

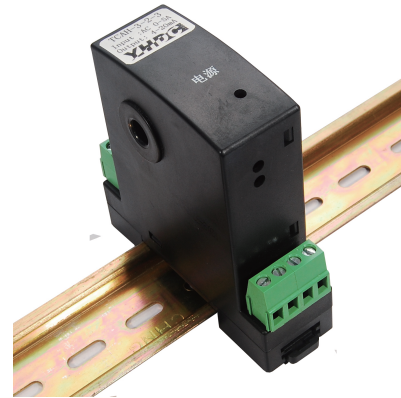
Working temperature:  $-10^{\circ}\text{C} \sim +70^{\circ}\text{C}$

Storage temperature:  $-40^{\circ}\text{C} \sim +85^{\circ}\text{C}$

Dielectric strength: 2.5KV 50Hz 1min

Overload capacity: 8 times 0.1S

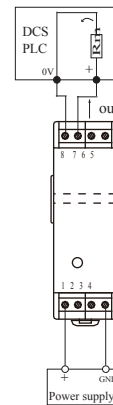
Waterproof level: IP00



### Technical parameter:

Rated input	1~50	A
Input measure range	$I_p * 120\%$	A
Rated output	0-20; 4-20	mA
	0-5; 1-5	V
Accuracy	0.5 1	%
Linearity	$\leq 0.5$	%
Supply voltage( $\pm 5\%$ )	+12; +24	V
Current consumption	$< 35 + I_o$	mA
Load capacity	10V/20mA	
Zero offset $T_A = 25^{\circ}\text{C}$	$\leq 0.1\text{mA}$ or $10\text{mV}$	
Response time	$< 350$	ms
Working frequency	50-400	Hz
Weight	124	g

### Connection diagram:



#### Terminal definition

- 1: +V
- 4: GND
- 7: Iout/Vout
- 8: GND

※① Selective ripple ( $\leq 20\text{mV}$ )

Stable auxiliary power supply

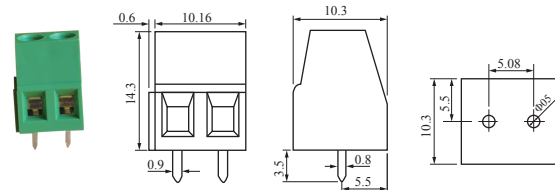
② Turn on auxiliary power

③ Auxiliary power supply transducer

④ Transducer detects primary current

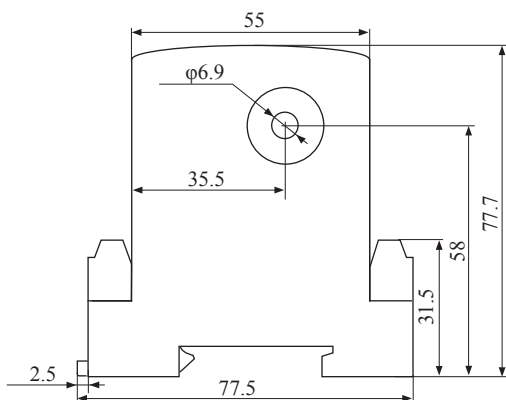
⑤ The two GND interior is not isolated

### Plug connect diagram:

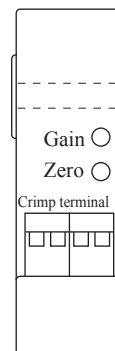


PCB board straight welding crimp terminal, Distance 5.08

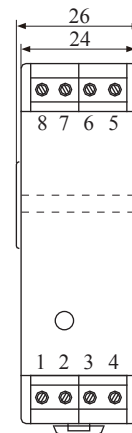
### Dimensions:



Front view



Side view



Top view