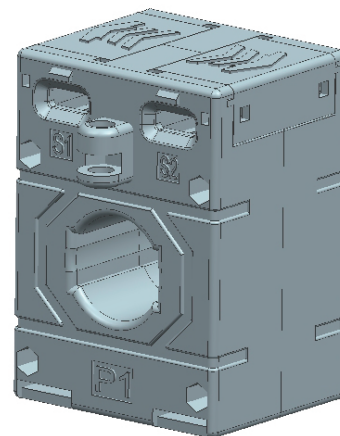


## Model: BCT10260

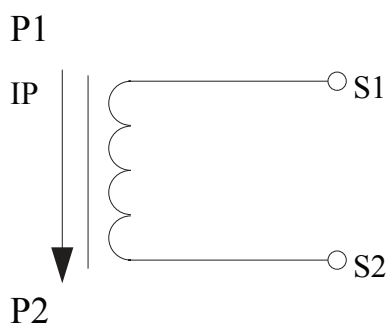
BCT series are the current transformer which are designed for Industrial equipment

### Technical index:

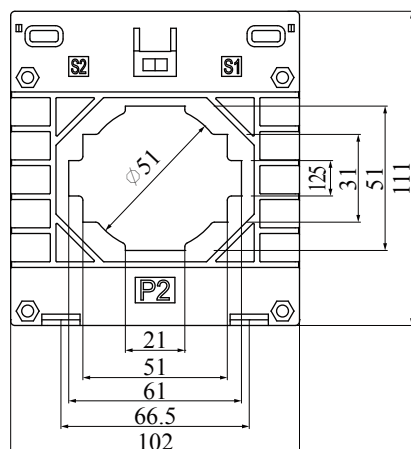
- Mounting type: Silicon steel / ultracrystalline
- Output current: 0.1A、1A、5A(can be customized)
- core material: Silicon steel
- Installation place: Indoor
- Flame resistance: : UL94-V0
- Working temperature: -35°C~+85°C
- Storage temperature: -45°C~+95°C
- Altitude: ≤1000m
- atmospheric conditions: no serious pollution
- Dielectric strength: AC 3KV/1min 50Hz(secondary/shell)



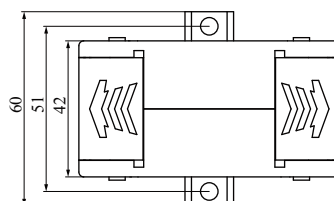
### Connect diagram:



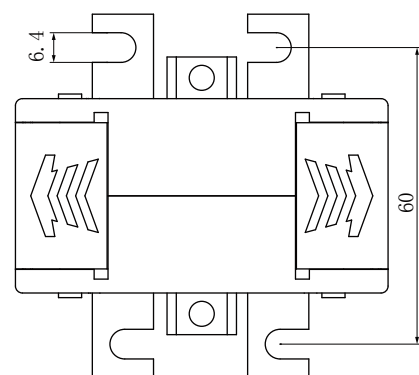
### Dimension(in mm):



Front View



Top view



Bent lug size View

### Electrical Index:

turn ratios A	Rated output(VA)					Turns of through hole
	0.5S	0.2S	0.2	0.5	1	
200A/5A	---	---	---	2.5	3.75	1
400A/5A	2.5	2.5	2.5	3.75	5	1
500A/5A	3	3	3.75	5	7.5	1
600A/5A	3.75	3.75	5	7.5	10	1
750A/5A	5	5	5	10	15	1
800A/5A	5	5	5	10	15	1
1000A/5A	5	5	7.5	10	15	1
1200/5A	7.5	7.5	10	15	20	1
200A/1A	---	---	---	1.5	2.5	1
400A/1A	---	---	---	2.5	3.75	1
500A/1A	---	---	---	3.75	5	1
600A/1A	---	---	10	5	7.5	1
750A/1A	---	---	13	7.5	10	1
800A/1A	---	---	18	10	15	1
1000A/1A	---	---	19	10	15	1
1200A/1A	---	---	2.5	10	15	1
400A/0.1A	---	---	2.5	3.75	5	1
500A/0.1A	---	---	3.75	5	7.5	1
600A/0.1A	---	---	5	7.5	10	1
750A/0.1A	---	---	5	10	15	1
800A/0.1A	---	---	5	10	15	1
1000A/0.1A	---	---	7.5	10	15	1
1200A/0.1A	---	---	10	15	20	1