

## Model: THST21WA

Circle plug terminal output, sub-plate installation; The faulty wiring can lead to product damage; The output is linear with primary test current, and the output signal can be directly enter automatic control equipment or PLC port.

### Safety indexes:

Flame retardant: UL94-V0

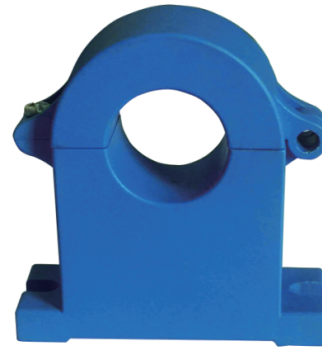
Working temperature:  $-10^{\circ}\text{C} \sim +70^{\circ}\text{C}$

Storage temperature:  $-40^{\circ}\text{C} \sim +85^{\circ}\text{C}$

Dielectric strength: 2.5KV 50Hz 1min

Overload capacity: 8 times 0.1S

Waterproof level: IP00 (Terminal needs to be sealing treatment of IP44)

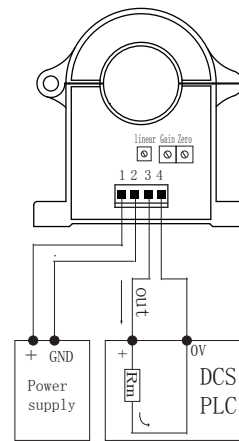


The picture is for reference only

### Technical parameter:

Rated input	50 ~ 500	A
Input measure range	$I_p * 120\%$	A
Rated output	0-20; 4-20	mA
	0-5; 1-5; 0-10	V
Accuracy	1	%
Linearity	0.5	%
Supply voltage( $\pm 5\%$ )	+12、+24	V
Current consumption	$38 + I_o$	mA
Load capacity	10V/20mA	
Zero offset $T_A=25^{\circ}\text{C}$	$\leq 0.1\text{mA}$ or $\leq 10\text{mV}$	
Response time	< 350	ms
Working frequency	50-400	Hz
Weight		g

### Connection diagram:

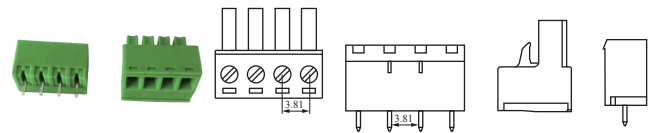


Terminal definition

- 1: +Vc
- 2: GND
- 3: Iout/Vout
- 4: GND

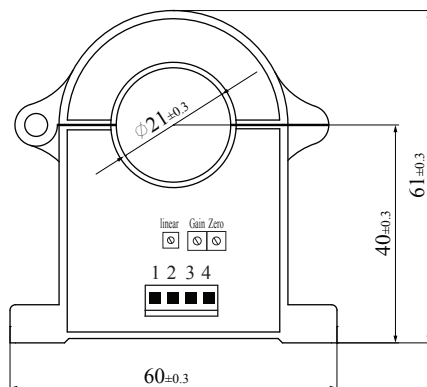
- ※① Selective ripple ( $\leq 20\text{mV}$ )
- Stable auxiliary power supply
- ② Turn on auxiliary power
- ③ Auxiliary power supply transducer
- ④ Transducer detects primary current
- ⑤ The two GND interior is not isolated

### Plug connect diagram:

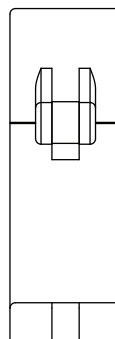


Crimping terminal quick plug, KF2EDGK-3.81-4P--Staight needle, Distance 3.81

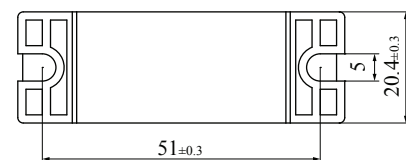
### Dimensions:



Front view



Side view



Bottom view