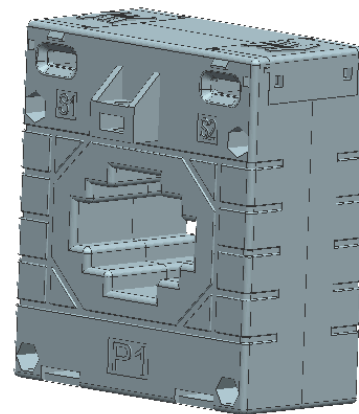


Model: BCT8041

BCT series are the current transformer which are designed for Industrial equipment

Technical index:

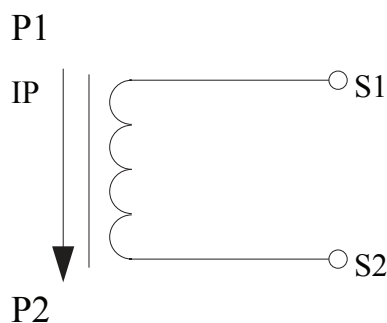
- Mounting type: Sub-plate / suspending type
- Output current: 0.1A、1A、5A(can be customerized)
- core material: Silicon steel / ultracrystalline
- Installation place: Indoor
- Flame resistance: : UL94-V0
- Working temperature: -35°C~+85°C
- Storage temperature: -45°C~+95°C
- Altitude: ≤1000m
- atmospheric conditions: no serious pollution
- Dielectric strength: AC 3KV/1min 50Hz(secondary/shell)



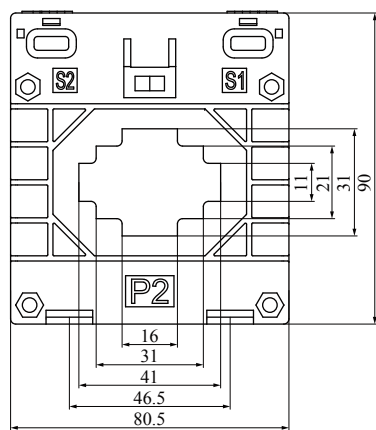
Electrical Index:

turn ratios A	Rated output(VA)					Turns of through hole
	0.5S	0.2S	0.2	0.5	1	
150A/5A	---	---	1.5	1.5	2.5	1
200A/5A	1.5	1.5	2	2.5	3.75	1
250A/5A	2	2	2.5	3.75	5	1
300/5A	2.5	2.5	2.5	3.75	5	1
400/5A	2.5	2.5	2.5	5	7.5	1
500/5A	3.75	3.75	3.75	5	10	1
600A/5A	3.75	3.75	3.75	5	10	1
150A/1A	---	---	---	1.5	2.5	1
200A/1A	---	---	2	2.5	3.75	1
250A/1A	---	---	2.5	3.75	5	1
300A/1A	---	---	2.5	3.75	5	1
400A/1A	---	---	2.5	5	7.5	1
500A/1A	---	---	3.75	5	10	1
600A/1A	---	---	3.75	5	10	1
150A/0.1A	---	---	8	10	12	1
250A/0.1A	---	---	1.5	3.5	5	1
400A/0.1A	---	---	3	6	8	1
600A/0.1A	---	---	4	8	10	1

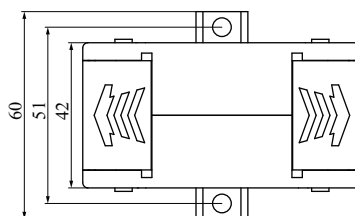
Connect diagram:



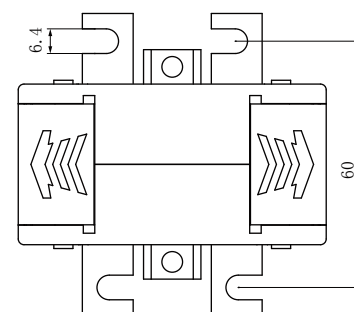
Dimension(in mm):



Front View



Top view



Bent lug size View